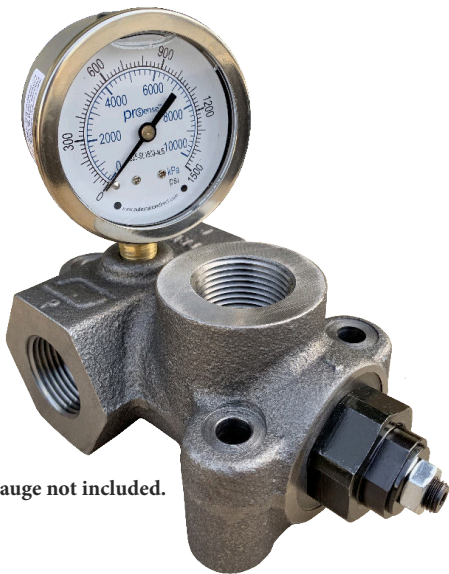


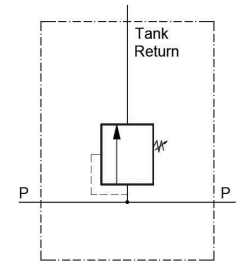
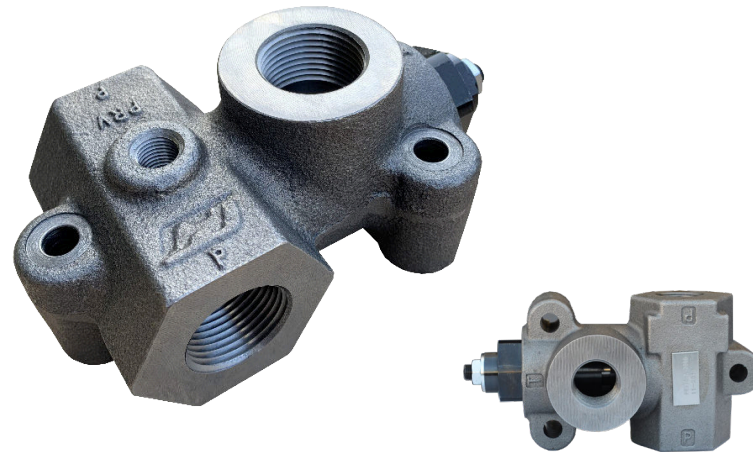


# Inline Relief Valve

## NOW AVAILABLE WITH GAUGE PORT



gauge not included.



### Specifications:

PRV series in-line pilot-operated relief valves max 60gpm/max 5000psi

Input Flow	60GPM
Max Operating Pressure	5000psi @ SAE port only
Operating Temperature	-40°C to +95°C (-40°F to 200°F)
Material	High strength cast iron and high grade steel
Filtration	ISO code 16/13 SAE Class 4 or better
Mounting Position	In-line. No restriction
Seal	Buna-N

### PRV Cartridges

Part Number	Replacement for	Description
PRVC60-A-2500	RP60A-2500	2500psi, adj 500-5000psi
PRVC60-A-3000	RP60A-3000	3000psi, adj 500-5000psi

### Castings with Cartridge

Part Number	Replacement for	Port Size	Relief Setting	Casting Only
PRV16-A-3000-GP	A25514P-100-25J	SAE-16	with gauge port, 3000psi screw adj. 500-3500psi	B-PRV16-A-GP
PRV12-A-3000	RPL-12-A-3000	SAE-12	3000psi screw adj. 500-3500psi	B-PRV12-A
PRV16-A-3000	RPL-16-A-3000	SAE-16	3000psi screw adj. 500-3500psi	B-PRV16-A
PRV16-A-2500-GP	A25514P-100-25J	SAE-16	with gauge port, 2500psi screw adj. 500-3500psi	B-PRV16-A-GP
PRV100-A-2500-GP	A25514P-100-30	1" NPT	with gauge port, 2500psi screw adj. 500-3500psi	B-PRV100-A-GP
PRV12-A-2500	RPL-12-A-2500	SAE-12	2500psi screw adj. 500-3500psi	B-PRV12-A
PRV16-A-2500	RPL-16-A-2500	SAE-16	2500psi screw adj. 500-3500psi	B-PRV16-A
PRV75-A-2500	RPL-75-A-2500	3/4" NPT	2500psi screw adj. 500-3500psi	B-PRV75-A
PRV100-A-2500	RPL-100-A-2500	1" NPT	2500psi screw adj. 500-3500psi	B-PRV100-A